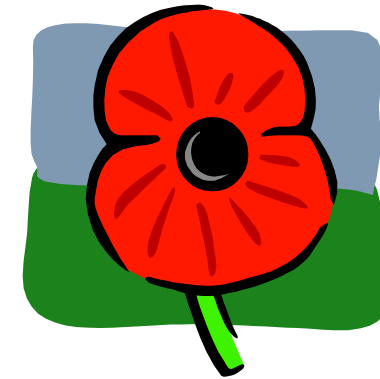


# Bow Brickhill Parish News



## NOVEMBER 2010

No 377

DATES FOR YOUR DIARY—NOVEMBER	
Monday 1st	Line Dancing. 7.00pm Pavilion.
Tues 2nd	Bow Brickhill Club. 1.00pm to 3.00pm. Pavilion John The Barber. 2pm to 6pm Greenways Lay-by
Weds 3rd	Brownies. 6.00pm to 7.15pm. Church Hall. Bow Brickhill History Society. 8pm Church Hall
Thurs 4th	Youth Club 7pm to 9pm. Pavilion
Monday 8th	Line Dancing. 7.00pm. Pavilion Book Group Contact Beverley Thompson
Weds 10th	Brownies. 6.00pm to 7.15pm. Church Hall.
Thurs 11th	Parish Council Meeting. 7.30pm Pavilion Click and Clack. 7.30pm. The Wheatsheaf
Sat 13th	Bow Brickhill Feast. 12Noon to 2.30pm. The Wheatsheaf
Sunday 14th	Service of Remembrance. 3.00pm. War Memorial
Mon 15th	Line Dancing. 7.00pm Pavilion.
Tuesday 16th	John The Barber. 2.00pm to 6.00pm Greenways Lay-by
Weds 17th	Brownies. 6.00pm to 7.15pm. Three Parishes Outing to Hemel Hempstead.
Thurs 18th	Youth Club 7pm to 9pm. Pavilion Woburn Sands Big Band. 7.30pm. Ellen Pettit Memorial Hall
Sat 20th	Church Bazaar. 2pm Pavilion
Monday 22nd	Line Dancing. 7.00pm Pavilion.
Weds 24th	Brownies. 6.00pm to 7.15pm. Church Hall.
Thurs 25th	WI. 7.30pm. Pavilion. AGM with Fish 'n' Chip supper. Compe-
Sunday 28th	All Saints Lunch Club. 12.15 for 12.30pm. Church Hall Advent Carol Service. 4.00pm. Church
Mon 29th	Line Dancing. 7.00pm Pavilion.
Tuesday 30th	John The Barber. 2.00pm to 6.00pm Greenways Lay-by

### Contents

<b>Contacts</b>	<b>2</b>
<b>Parish News</b>	<b>3</b>
<b>WI and BB Club</b>	<b>4</b>
<b>BB Feast</b>	<b>5</b>
<b>Church Events</b>	<b>6 &amp; 7</b>
<b>Services</b>	<b>8 &amp; 9</b>
<b>Church Events</b>	<b>10</b>
<b>ASTRA News</b>	<b>11</b>
<b>Youth Club &amp; PCC</b>	<b>12</b>
<b>Events &amp; News</b>	<b>13-15</b>
<b>Dates For Diary</b>	<b>16</b>

## Bow Brickhill Parish Council

**Parish Clerk** Julie Summerfield  
12 Station Road  
07904 339391

bowbrickhill.clerk@jdsummerfield.com

### Councillors:

Georgy Holden 372626	Gill Cannell 373602
Kay Leeming 372032	email
Beverley Thompson 372192	bowbrickhillpavilion@gmail.com
Ann Sidgwick RFO 368685	

### Chair

Rupert Fairclough  
37 Station Road  
Tel. 367711

### Pavilion Bookings

### Pavilion Caretaker

Eddie Chesse  
370486

## CONTACTS

Lunch Club: Kay and Stuart on (372032)

Book Club: Beverley Thompson (372192);  
beverleydianethompson@gmail.com

Bow Brickhill Club: Chris Loak (373768)

Bow Brickhill F.C: Odette Holland (370904) or Roy Toombs (375151)

Brownies: Sally Pepper (375365)

Buckaneers (Model Club): Derek Giles (374494)

Church Wardens: Stuart Leeming (372032) or John Wales (373907)

Click & Clack: Elaine Boscott (377543) or Gill Cannell (373602)

Line Dancing: Jan Cade (07721 420176)

Parish News: Sally Robinson [sallyhawtin@hotmail.co.uk](mailto:sallyhawtin@hotmail.co.uk)

Website, E-Group and History Society: [sue@bowbrickhill.com](mailto:sue@bowbrickhill.com)

Women's Institute: Sylvia Fox (378289)

Youth Club: Beverley Thompson (372192)

Thames Valley Police Non Emergency: (08458 505505)

Email: [RuralSouthNHPT@thamesvalley.pnn.police.uk](mailto:RuralSouthNHPT@thamesvalley.pnn.police.uk)

David Hopkins – Danesborough Ward Borough Councillor for Bow  
Brickhill: (01908 582632) [david.hopkins@milton-keynes.gov.uk](mailto:david.hopkins@milton-keynes.gov.uk)

## Article LTP3 – Transport Strategy

### Residents asked to shape future of transport in Milton Keynes

Residents are being invited to share their ideas about how transport can be developed across Milton Keynes over the next 15 years.

Milton Keynes Council is developing a world class transport vision and strategy for Milton Keynes which will form our third Local Transport Plan (LTP3).

The plan will look at how transport can be improved to address key transport issues and contribute to achieving wider goals.

Which ever mode of travel you use, whether you walk, cycle, ride a motorbike, catch the bus or train or drive a car, you will be affected by our policies contained within LTP3.

This is your opportunity for to tell us what you think the long term priorities are for transport to help keep Milton Keynes moving in the future.

To give your views, please visit

[www.milton-keynes.gov.uk/transport-strategy](http://www.milton-keynes.gov.uk/transport-strategy).

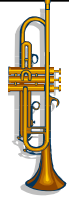
### Growing MK survey – are we communicating in the right way?

Milton Keynes Council and Milton Keynes Partnership would like to ask you a few questions so we can find out if we're sharing the right information in the right way at the right time about the growth and development of Milton Keynes.

Please tell us what you think by completing a short survey by Friday 19 November at:

[www.milton-keynes.gov.uk/growingMK-survey](http://www.milton-keynes.gov.uk/growingMK-survey)

We appreciate your time and opinions, which will help improve the communications you receive from us.



## WOBURN SANDS BIG BAND SOCIETY

THURSDAY 18<sup>th</sup> November 2009

7pm for 7.30 pm

Ellen Pettit Memorial Hall Woburn Sands



**Our Annual Film Night**  
**Watch and hear the Big Bands play**

ENTRY: £2.00,  
Non members £3.00

Membership application forms available at the desk.

For further information call  
David Higgs, 01908 583937, or Rex Harris, 01908 281235  
Meetings are held on the third Thursday in each month.

## ST MICHAEL'S CHURCH WOBURN SANDS

Second Christmas Tree Festival  
**Friday 3<sup>rd</sup> – Sunday 5<sup>th</sup> December**

Church open 11am to 5pm each day  
£2.50 (£2), Children £1, Under 5s free

Mulled Wine and Mince Pies

Live music each day

More details from Anne Cooke on 01908 582306




**CLARIDGE'S  
CHILDCARE**

I AM A CHILDREN'S CARE PROVIDER BASED IN WALNUT TREE  
I HAVE A WARM AND FRIENDLY ENVIRONMENT AND AM EQUIPPED FOR A VARIETY  
OF ACTIVITIES FOR ALL AGES

NUTRITIOUS MEALS \* SECURE GARDENS \* OUTINGS \* TOYS \* ARTS AND CRAFTS  
OFSTED REGISTERED \* QUALIFIED \* NCFE MEMBER \* FULLY INSURED

**PLEASE CALL JULIE  
FOR AN INFORMAL CHAT**

**01908 608483  
07977 796889**



## PARISH NEWS

### Dog Fouling at Pavilion

Please ensure your dog is kept on a lead when in the grounds of the Pavilion.

We have an ongoing problem with dog mess on the football pitches which as you will understand is very unpleasant for anyone using the grounds.

A dog bin is provided for your use to the right by the hedging along the public footpath.

This area is used by all the community and we would appreciate your co-operation

### Foul Smelling Drains

The Parish Council is aware that, from time to time, residents (particularly in Church Road) experience foul smells from the drains. The first port of call in such situations is Anglian Water, who can be contacted on 08457 145 145.

Following a recent incident, the Council has written to Woburn Golf Course to express concern about the failure of a pump which meant that a build-up of sewage occurred, causing a foul smell in Church Road.

We would like to monitor the general situation with the drains, so if you have cause to contact Anglian Water it would be very helpful if you would also inform the Parish Clerk, Julie Summerfield, at 12 Station Road.

## WHEELS TO WORK



Wheels 2 Work is a scheme for young people aged 16 – 19 years old who live in rural villages around Great Brickhill and have trouble accessing transport to get them to college or a place of work or training. The scheme provides them with a taxed and insured Moped, all the safety equipment, CBT & Road safety training and RAC breakdown. In return we ask for a small monthly fee of £40.00 + they pay for the fuel.

Vicki Parker Mobile Outreach Coordinator (9AM-12PM)  
Community Impact Bucks Administrator (1PM - 5PM)  
Tel: 01296 421036 Community Impact Bucks Number: 0845 3890389  
Email: [vicki@communityimpactbucks.org.uk](mailto:vicki@communityimpactbucks.org.uk)  
Website: [www.communityimpactbucks.org.uk](http://www.communityimpactbucks.org.uk)

## WI

The village WI recently hosted the Brickhills Group meeting and after hearing the annual reports of each Institute, which help to generate new ideas for speakers and activities, our President welcomed Sarah Setterfield and her team. A vivacious speaker, Sarah launched into her topic "Fabulous at 50" and drawing ladies from the audience, proceeded to demonstrate how the right colours can dramatically influence how we look and feel about ourselves. She followed up with numerous tips on how to highlight our good points whilst disguising everything else.

Refreshments were served during a break in her talk which also gave members the opportunity to peruse a range of handmade jewellery brought along by one of her colleagues.

Watch out for some 'new looks' around the village

## MIDNIGHT MOO—THANKS

Thank you to everyone who very generously sponsored myself and my friend Karen on 'Midnight Moo' 10 mile walk for Willen Hospice.

We raised £414.50 Which will go towards the care of patients across Milton Keynes and the surrounding area.

Alison Shirley-Lester

## BOW BRICKHILL CLUB

On Tuesday October 5th, the club held their eleventh Annual General Meeting which, together with our "Cook Eat and Wear" sale, made for a very busy afternoon. However we made time for our usual entertainment of quiz, raffle and tea. This month our quiz had three winners, a tie between Mick Parker, Shirley Parker and Joan West. The drawing of the raffle, followed by tea, once again brought our meeting to a close.

Our next meeting will be in the Pavilion, at our revised winter time of **1.00pm**, on **Tuesday November 2<sup>nd</sup>** when, after a Buffet lunch, Sylvia Fox will demonstrate how to make and decorate our own Christmas cards.



## THREE PARISHES OUTING

### HEMEL HEMPSTEAD

FARE: £6.00

WEDNESDAY 17th November 2010

DEPARTING 10:00 AM

Returning approx 4.00pm

Pick Up Points

Contact for tickets

Bow  
Brickhill

Church Road  
Greenways

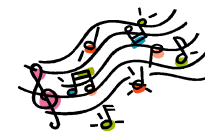
Julie  
07904 339391

Available to all parishioners over 60 living in the three parishes

Sponsored by: Bow Brickhill Parish Council;  
Wavendon Parish Council; Woburn Sands Town Council

In conjunction with

**AGE** Milton Keynes  
*Concern*



## PORGY AND BESS CONCERT PERFORMANCE 14<sup>TH</sup> NOVEMBER 7.30 p.m. Milton Keynes Theatre



Milton Keynes Chorale and Danesborough Chorus are joining forces with MK City Orchestra to give a performance of the concert version of Gershwin's "Porgy and Bess" at the theatre on **Sunday 14<sup>th</sup> November**. They will also be performing extracts from Mussorgsky's "Boris Godunov" and MKCO will be playing Prokofiev's "Romeo and Juliet Suite no 2."

Tickets are priced from £8 to £20 (with concessions) and are available from [www.mkchorale.org.uk](http://www.mkchorale.org.uk) or MK Chorale Box Office 01908 320958.

## STOP PRESS

**EXCLUSIVE LIMITED EDITION ASTRA ABSEIL CHRISTMAS CARDS WILL BE ON SALE AT THE AUTUMN BAZAAR**

## YOUTH CLUB

The Youth Club paid another visit to the Caldecotte Xperience outdoor education centre on 21<sup>st</sup> October. This time our intrepid group took on the challenge of the climbing wall. Now the nights have drawn in our members had to tackle the climbing wall in the dark with only ropes, floodlights and eagle-eyed leaders to help them.



The 4<sup>th</sup> November meeting in the Pavilion is a hands-on musical event that should not be missed. We have invited an expert in to bring along his collection of African drums and lead our members in a drumming session.



The Youth Club has received a generous donation from Danesborough Councillor David Hopkins, which we are using to replace our games equipment. And thanks are owed to another kind donor who has given us several Playstation2 games.

Please keep an eye on the Youth Club website [www.bbyc.org.uk](http://www.bbyc.org.uk) for forthcoming events

## BOW BRICKHILL PCC

A number of people have said that they would like to contribute towards the upkeep of the new graveyard so that it can be maintained on a more regular basis. This would involve grass mowing and keeping things tidy generally.



If you would like to contribute, for example, £10 or even £20 a year, please give your donation to either:

Andrea Spurdle – Treasurer for the PCC  
42a Station Road, Bow Brickhill, Milton Keynes, MK17 9JW.

Or  
Brenda Goodger – Member of the PCC  
33 Church Road, Bow Brickhill, Milton Keynes, MK17 9LH.

*Bow Brickhill History Society*

presents

# BOW BRICKHILL FEAST

**ROAST PORK DINNER**

**BOW BRICKHILL PUDDING**

to be served at The Wheatsheaf, Station Road, Bow Brickhill

**SATURDAY 13TH NOVEMBER 2010**

between 12 noon and 2.30 pm

Adults £7.00, Children £4.00

Tickets to be purchased in advance from

The Wheatsheaf 01908 374795,

Sue 01908 372376, Mary 01908 647003

at 3 pm at The Wheatsheaf launch of

**“A WALK AROUND BOW BRICKHILL”**

historic heritage trail leaflet

**Bow Brickhill History Society**

will also be exhibiting historic photographs and displays

from 11 am until 4 pm

## BOW BRICKHILL ADVENT CALENDAR

This year we would like to have a living advent calendar, identifying 24 doors/windows in the village that we could look into. As this is the first time we are trying this, we are likely to be learning as we go.



Would you be willing to be one of the 24? It would be up to you how you would like to tackle this, but we would negotiate a date that would be convenient for you and you would then make/display that number on your door for the period 1-24 December. On your particular date you could do one of a number of things:

- \* open your curtains so that a mini Christmas display, or something that is special to you is visible. You would then keep this window lit for each evening leading up to 24th
- \* put something on your doorstep, and have your outside light on from your date until 24th
- \* invite people to knock at your door (eg from 1800-1830) and offer them a mince pie/play a carol from a CD
- \* some other creative idea

So far, we are hoping that the first door will be the Church Hall as the Christmas lights will be turned on on the 1st December with refreshments in the hall afterwards. The last door will be the church - open for the midnight service on 24th December. The school has agreed to be Sunday 12th December - we will be holding the Christingle family service there in the morning.

If you would like to host one of the dates, please contact Rosemary Clarke Tel: 370811 or [rosemary.clarke@googlemail.com](mailto:rosemary.clarke@googlemail.com)

## COPY DEADLINE – DECEMBER/JANUARY

Deadline for a combined December/January issue should be sent by 22nd November to Gill Cannell – email [bowbrickhillpavilion@gmail.com](mailto:bowbrickhillpavilion@gmail.com)

## THE ASTRA ABSEIL

In order to discover how much erosion damage there actually is on the church tower, ASTRA (All Saints Tower Restoration Appeal) Working Party commissioned a professional, industrial abseil company to conduct a full survey. This is a much more cost and time - efficient method than scaffolding would have been and took place over two days – 13th / 14th October.

We were very lucky with the weather – not too hot, little wind and no rain!

It was dramatic watching the two-man team swing themselves over the tower battlements and, suspended by just their ropes, sixty feet above the ground, commence their painstaking inspection – making notes and taking photos as they went.

Photographers from 3 Counties Radio, The Citizen and MK News visited on Wednesday afternoon to cover this unusual event. Look East and Anglia Television had expressed interest but we lost out to the Chilean Miners Rescue on the same day!

ASTRA is now anxiously awaiting the survey results in order to begin working out how much money will need to be raised to save the tower! We are really grateful for the incredible generosity of the people who have already made donations of both cash and time and skills - but we still have a long way to go! So, any further donations or imaginative fundraising ideas that any of you can come up with will be greatly welcomed by the team!

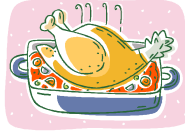


November's **ASTRA** fact: Do you know that the tower is 60 feet high, stands 200 feet above the plain and is 500 feet above sea level? No wonder it has been so useful over the centuries as a lookout post!!

### ALL SAINTS LUNCH CLUB

The November meeting will take place on  
**Sunday 28th November**  
**12.15pm for 12.30pm** in the Church Hall

All are welcome. For more details or to book in contact Kay or Stuart on 372032 or book with Chris Loak at the Bow Brickhill club.



### SERVICE OF REMEMBRANCE

Please join us for our annual service of remembrance on  
**Sunday November 14<sup>th</sup>**  
**3.00pm**  
**at the War Memorial.**



Tea will be served afterwards in the Church Hall.

### SWITCHING ON THE CHRISTMAS TREE LIGHTS



This year the 'switch on' will take place on

**Wednesday 1<sup>st</sup> December**  
**at 6.45pm**  
**on the village green.**

Weather permitting we will sing carols round the tree and this will be followed by mulled wine and mince pies, served by the Brownies, in the Church Hall.

### ADVENT SERVICE

Our Advent Carol Service is on

**Sunday 28<sup>th</sup> November**  
at the earlier time of **4.00pm.**



This candlelit service celebrates the "coming of the light of the world" by the foretelling of the birth of Jesus, We hope you can join us and please bring a torch.



### ALL SAINTS CHURCH BOW BRICKHILL AUTUMN BAZAAR SATURDAY 20th NOVEMBER 2.00pm THE PAVILION



Organisation for this our major fundraising event is well underway but once again we are appealing for help by way of contributions to the following stalls:

Tombola (Brownies)	Brownies will collect in Greenways and Station Road on Weds 10th November and Church Road on Weds 17th November. If you have a contribution but will be out on these days, please contact Sally Pepper 4 London End Lane Tel 375365
Cakes	May Butcher, 25 Station Road, Tel 642555
Bric-a-brac	Wendie Mills, 52 Station Road, Tel 374745 or Diana Kesterton, 4 Woburn Sands Road Tel 372434.
Books	Alistair Twigg, 4 London End Lane, Tel 375365
Jigsaw Puzzles	John Wales, 6 Downs View, Tel 373907
Raffle	Andrea Spurdle, 42A Station Road, Tel 648373
Plants	Kay & Stuart Leeming, 74a Station Road, Tel 372032
Toys	Andrea Spurdle, 42A Station Road, Tel 648373

Contributions can be taken to the appropriate stallholders or contact if you require anything to be collected. Please note that furniture, large items, clothes or videos cannot be accepted for the bric-a-brac and no items can be accepted on the day.

As well as a good variety of stalls there will also be games and refreshments available, and information about ASTRA, the church tower restoration project – there will also be exclusive limited edition ASTRA abseil Christmas cards on sale.

So do come along and bring all the family on November 20th - you might find a bargain, buy a Christmas present, try your luck or just enjoy a cup of tea with friends.

**SERVICES IN THE BENEFICE**

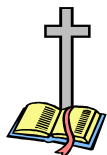
**Bow Brickhill All Saints**

**7th November**  
11.00am Holy Communion with Baptism

**14th November**  
3.00pm Remembrance  
Service at the War  
Memorial

**21st November**  
11.00am Matins

**28th November**  
4.00pm Advent Carol  
Service



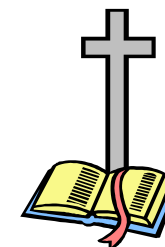
**Great Brickhill  
St Mary the Virgin**

**7th November**  
9.30am Holy Communion

**14th November**  
10.50am Remembrance Service  
6.00pm Compline

**21st November**  
9.30am Holy Communion

**28th November**  
11.00am Family Service with  
Baptism



**Stoke Hammond St Luke**

**7th November**  
11.00am Family Service at Meth-  
odist Church

**14th November**  
10.45am Remembrance Service

**21st November**  
8.30am Holy Communion

**28th November**  
9.30am Morning Worship

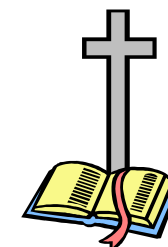
**Little Brickhill  
St Mary Magdalene**

**7th November**  
NO SERVICE

**14th November**  
10.50am Remembrance Service

**21st November**  
11.15am Family Service

**28th November**  
9.30am Holy Communion



**CHURCH ROTAS**



**NOVEMBER**

**FLOWERS**

**CLEANING**

7th  
14th  
21st  
28th

L Drabble  
L Drabble  
ADVENT

A Cookson  
A Cookson  
E Morrison  
E Morrison